



**DALBO®**



## Humble beginnings to international agricultural manufacturer

### Presence in the UK

Dalbo UK operate from Aylsham, Norfolk from where its provided Agricar with an excellent service, due to the dedication from us all, our partnership has grown consistently over the years.

### Dalbo Promise

Dalbo delivers what it promises, they are dedicated in providing you with the tools to make you succeed in crop production, backed with excellent in field support makes Dalbo your NO 1 Choice

### Product Range

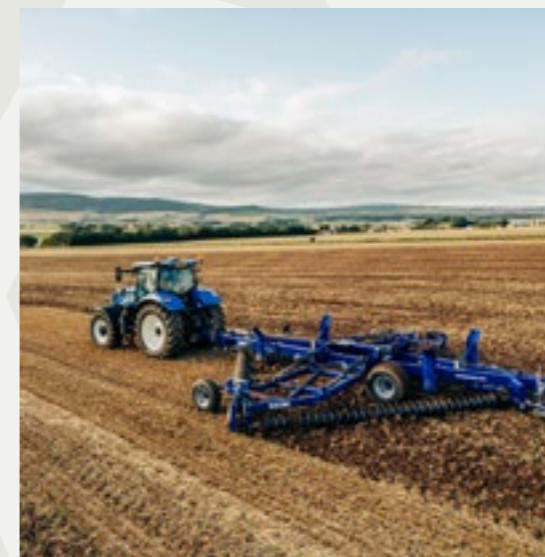
Dalbo is committed to deliver the best agricultural equipment, today they offer a full range of innovative equipment in all sizes for farmers and contractors, there product lines include:

Henry Pederson started Bindeballe Smedie, in 1948, manufacturing items such as unloader lifts and agricultural carts for local farmers. In 1963, the company changed names to DALBO and has since grown internationally, specialising in the development and production of high-quality agricultural implements.

DALBO remains at the forefront of technological development to meet the need for efficient and reliable machines in modern agriculture. Maintaining a permanent dialogue with the market and provide market-appropriate solutions to companies of all sizes, where flexible production and short delivery times are both top priorities.



# Dalbo Cultivators



### Dalbo's Innovation and Unique Characteristics

- » Fully hydraulic folding and unfolding of sections enable switching from driving on roads to field operation without leaving the tractor.
- » Automatic transport security for optimal safety during transport.
- » Unique frame design and construction that provides a low centre of gravity, great stability and excellent durability.
- » Sealed and greaseable ball bearings from reputable suppliers ensure a long life and simple maintenance.
- » LED lighting. Safety for you and all others on the road.
- » Shaft made of high-tensile steel.
- » Strong frames made of quality steel and high-tensile steel.
- » DUOFLEX system that allows individual movement for each harrow section, thus ensuring optimal ground contact, regardless of the contours and irregularities of the ground.
- » Hydraulic weight distribution in combination with DUOFLEX ensures an evenly distributed ground pressure over the entire working width.

### Seedbed Cultivators

DALBO offer a total of four different categories of seedbed cultivators.

- » CULTILIFT is a mounted cultivator available in working widths from 3.00 to 8.00 m.
- » CULTITRAIL is a trailed cultivator available in working widths of 5.00 and 6.00 m.
- » CULTIMAX is a 3-part heavy duty trailed cultivator in the working widths from 5.50 to 10.00 m.
- » ROLLOMAXIMUM is a high precision seedbed cultivator available in working widths from 6.20 to 12.40 m.

### Cultivation Range

- » Seedbed Cultivator – for seedbed preparation and secondary cultivations.
- » Stubble Cultivator – for post-harvest primary cultivation.



“  
DALBO’s CULTITRAIL is an excellent tool for farmers who need a simple, yet efficient, seedbed cultivator.”



## Cultitrail 500-600

CULTITRAIL is a trailed seedbed cultivator with a transport width of only 2.50 m. The simple construction is equipped with a hydraulically adjustable cracker board and a 5-row harrow section with spring tines, which provides an exceptional cultivating effect. A CULTITRAIL is simplicity and productivity combined in one machine.

### Concept

DALBO’s CULTITRAIL is an excellent tool for farmers who need a simple, yet efficient, seedbed cultivator. The frame is designed without compromising the distribution of the harrow tines. A CULTITRAIL, therefore, has a perfect tine configuration with at least 400 mm to the nearest tine. This design ensures a fantastic flow of soil and plant residues with minimal risk of blockages.

A CULTITRAIL can be equipped with various options to suit each customer's individual needs. A CULTITRAIL will help you to produce optimal seedbeds, regardless of the combination of options you choose.

### Standard Equipment



- » Fully hydraulic folding and unfolding of the CULTITRAIL. Switching from driving on roads to field operation without leaving the tractor.
- » LED lighting.
- » 5 rows consisting of 45 x 10 mm tines with inter row spacing of 440mm
- » Standard tine spacing of 80 mm or 160 mm when fitted with goose-foot point
- » Heavy-duty hydraulic cracker board.
- » Strong frames made of quality steel.



**DALBO**  
Product Brochure

## Cultilift 300-800

**DALBO**

CULTILIFT is a heavy-duty mounted seedbed cultivator designed for cost-effective seedbed preparation. The standard configuration includes a mechanically adjustable levelling board, a 4-row harrow section and a depth adjustment roller at the rear. This provides an optimal combination of levelling, harrowing, and consolidating for subsequent sowing.



**DALBO**  
Product Brochure

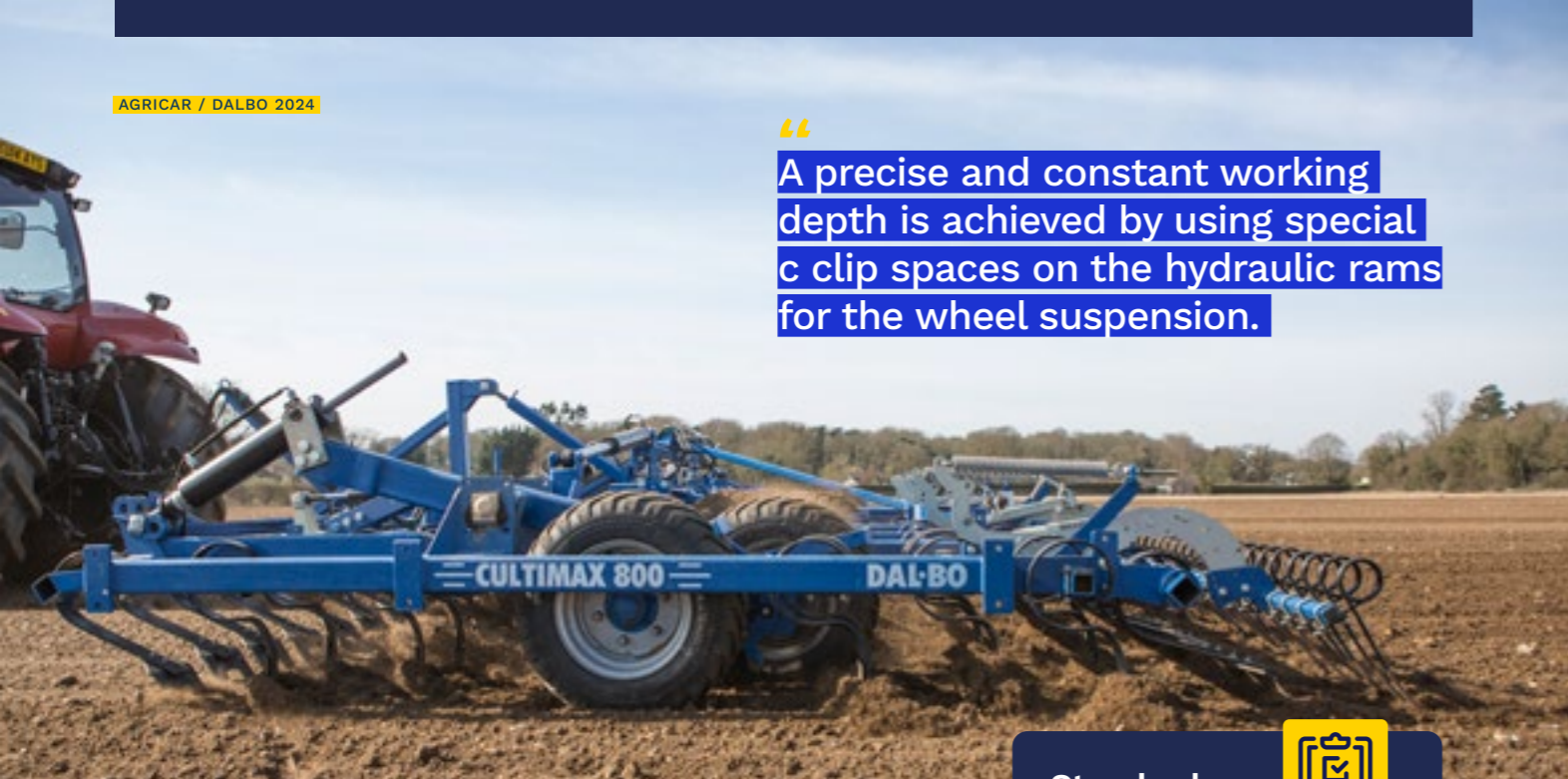
### Concept

DALBO’s CULTILIFT is a good choice for seedbed preparation on small and medium-sized farms with all soil types. It is manufactured in the well-known DALBO quality and offers great value for money. The mounted seedbed cultivator comes with simple and thoroughly tested solutions as standard, which provides an affordable solution and excellent durability. The excellent programme of equipment makes it possible to adapt the CULTILIFT to your specific purpose, which provides you with better value and efficiency. The various combinations of options allow the individual farmer to easily specify a CULTILIFT to fit their needs and soil type.

### Standard Equipment



- » Fully hydraulic folding and unfolding of the CULTILIFT. Switching from driving on roads to field operation without leaving the tractor.
- » 4 rows of heavy-duty spring tines, with 80 mm spacing and 350mm between each row.
- » Ø400 mm rear cage roller.
- » Front levelling board.
- » Support wheels on CULTILIFT 700 and 800.
- » Strong frames made of quality steel.



“ A precise and constant working depth is achieved by using special c clip spaces on the hydraulic rams for the wheel suspension.

## Cultimax 550-1000

CULTIMAX is a heavy-duty 7-row seedbed cultivator with high working capacity. It's an ideal cultivator for seedbed preparation on ploughed soil. Due to its innovative range of accessories, CULTIMAX can be used for many different purposes in the area of seedbed preparation.

### Concept

DALBO's trailed CULTIMAX seedbed cultivator is an optimal solution for both medium and large-sized farms. The hydraulically adjustable cracker board crushes clods as well as producing a level finish of the soil. This, combined with a tine spacing of 80 mm and a row spacing of at least 310 mm, ensures optimal cultivating and levelling, as well as an excellent flow of soil and plant residues through the cultivator. A precise and constant working depth is achieved by using special c clip spaces on the hydraulic rams for the wheel suspension.

Together with DALBO's hydraulic weight distribution via DUOFLEX, ensures an evenly distributed ground pressure over the entire working width, CULTIMAX is a very efficient and versatile seedbed cultivator that can be adapted to the customers individual needs.



**Standard Equipment**

- » Fully hydraulic folding and unfolding of the CULTIMAX. Switching from driving on roads to field operation without leaving the tractor.
- » LED lighting.
- » Strong frames made of quality steel.
- » 7 rows of heavy-duty spring tines.
- » Tine spacing 80 mm.
- » Hydraulic weight distribution.
- » 4 sets of bogie wheels 300/55/14.5.
- » Hydraulic cracker board, front.
- » Hydraulic weight distribution via DUOFLEX ensures an evenly distributed weight transfer over the entire working width, regardless of the contours of the ground.
- » DUOFLEX with individual working sections.



## Rollomaximum 620-1240

The ROLLOMAXIMUM is the premium precision seedbed cultivator on the market, designed for extremely efficient and accurate preparation of seedbeds in a single pass. The front and rear roller sections ensure optimal levelling and consolidation of soil, which results in a perfect seedbed.

### Concept

DALBO's ROLLOMAXIMUM is a unique hybrid of a 4-row seedbed cultivator: cracker board, levelling board and two roller sections. It was developed to meet the growing demands for improved germination of high value crops. The unique construction of the ROLLOMAXIMUM enables you to create a seedbed in a single pass in most soil types.

This means that the ROLLOMAXIMUM achieves a very high capacity without compromising on the quality of the work performed. The six operating zones of a ROLLOMAXIMUM are:

1. Wheel track eradicator, which eradicates compaction left from the tractor.
2. Cracker board, which crushes clods and begins leveling the seedbed.
3. First roller section, cast iron Crosskill rollers work to further break down and level the seedbed.
4. 4 row tine sections, which are controlled accurately to the desired depth via the hydraulic system.
5. Rear leveling board.
6. Rear pressed steel Crosskill roller, leaves a fine and even finish to the seedbed.

The ROLLOMAXIMUM is available in 6.2 and 7.5 m vertical folding and 9.3 and 12.4 m horizontal folding. All models fold to 3 m for safe road transport.

**Standard Equipment**

- » Fully hydraulic folding and unfolding. Allowing you to go from transport position to working position without leaving the tractor.
- » LED lighting.
- » Strong frames made of high-tensile steel.
- » Hydraulic weight distribution via DUOFLEX ensures an evenly distributed ground pressure over the entire working width, regardless of the contours of the ground.
- » DUOFLEX with individual working sections.
- » Automatic transport security for optimal safety during transport.
- » 4 row tine section with 8 cm spacing.
- » Hydraulic cracker board.
- » Crosskill roller front and rear.
- » Rear spring suspended levelling board.
- » Hydraulic brakes and hydraulic jack on 930 and 1240.
- » Hydraulic parallel-suspended cracker boards on 930 and 1240.
- » Hydraulically sprung Crosskill roller section on 930 and 1240.

# Trimax 300-520

The TRIMAX stubble cultivator is known for its impressive mixing effect of stubble and soil while providing a nice and level seedbed finish to make the following work easier. The TRIMAX is groundbreaking in that it has the largest underframe clearance on the market at 90 cm and a unique 3D stone protector developed by DALBO.



## Concept

DALBO's mounted TRIMAX is the perfect solution for farms of any size. It is equipped with a very robust and high underframe clearance, which makes working in stubble fields with a large amount of straw easier, as the trash can flow through the machine and does not get blocked. It is also excellent for breaking through ploughed soil when allowed to work at depth.

The TRIMAX NSH is equipped with specially designed 3D hydraulically sprung tines, which protect the frames and other mechanical parts of the harrow. After the tines, the ground is levelled off by spring-suspended serrated discs. These are mechanically adjusted and leave a level surface after the tines. Finally, there is a Ø600 mm T-ring cage roller, which crushes the clods left by the cultivator and supports its weight. The power requirement depends on the depth of the harrow and soil type. A power requirement of approx. 50 hp per metre working width is recommended for cultivating at a speed of 8-12 km per hour.



**DALBO**  
Product Brochure

## Stubble Cultivator

- » TRIMAX is a mounted cultivator available in working widths from 3.00 to 5.20 m.
- » POWERCHAIN 800 is a disc cultivator that, with its unique diamond-shaped construction, fulfils many functions in the field.
- » SUPERMAX a mounted cultivator available in 2.5m and 3m. With a row of auto reset legs, 2 rows of discs and HD packer.

## Standard Equipment



- » Fully hydraulic folding and unfolding of sections. Switching from driving on roads to field operation without leaving the tractor.
- » LED lighting.
- » Tine spacing 275 mm.
- » 50 x 20 reversible points.
- » Mixing disc incl. side disc.
- » Ø600 T-ring packer.
- » Coupling cat. 2 and 3.
- » 3D stone protection or shear bolt (shear bolts only available on working width 300 and 470)
- » Ground clearance 90 cm.
- » Strong frames made of quality steel and high-tensile steel.



**DALBO**  
Product Brochure

# Powerchain 800

## Standard Equipment



- » Wheels: 520/50x17 14 PLY
- » Support wheel front: 260/75-15.3
- » 132 Discs
- » Hydraulic chain tension
- » » LED road lights

The POWERCHAIN has a wide range of functions, and helps deal with weeds, decompose plant debris, create false seedbeds and at the same time levelling the field. The POWERCHAIN has the possibility to process potato haulm and cover crop.

If sowing, a seeder can be fitted to the POWERCHAIN to sow cover crop, thus saving a pass. The POWERCHAIN can handle in field undulations leaving a level finish whilst at the same time ensures a full cut (2-5 cm) across the full working width.

## Concept

POWERCHAIN 800 is fitted with 4 individual and loosely hung disc chains. Each chain contains between 31-35 discs and placed at a 40° angle of attack. The unique diamond shape of the chains and the distance between the discs, ensures a full cut across the working width. The chains both front and rear are hydraulically adjustable, to ensure optimal working of the discs in relation to speed and conditions in the field.



f Instagram YouTube ebay

www.agricar.co.uk | agricarstore.co.uk



**Standard Equipment**



- » Subsoiler leg
- » 520x6 mm discs
- » 600 mm bogie T-ring packer or a 650 mm single HD packer
- » Rubber suspension for discs
- » Hydraulic depth control
- » Double bearings

## SUPERMAX 250-300

SUPERMAX is a heavy-duty combination cultivator, ideal for loosening and cultivating stubbles. The machine consists of heavy duty subsoiler legs, two rows of discs and a packer section. The tines loosen the earth to a max depth of 400 mm, whilst the discs break down the soil and mixes the residue to a max depth of 150 mm. Finally, the soil is packed by a bogie T-ring packer or HD packer to leave a weatherproof finish.

### Concept

The SUPERMAX one pass cultivator is designed to eliminate compaction and cultivate via the 1 row of heavy duty subsoiler legs, followed by 2 rows of spring mounted 520 mm diameter discs and consolidate by using a 600 mm bogie T-ring packer or a 650 mm single HD packer. SUPERMAX is the ideal solution for intensive tillage without ploughing. SUPERMAX is a "one pass" solution, giving you a saving on time and diesel.

The working depth of the SUPERMAX is hydraulically controlled from the driver's seat. Two hydraulic rams simply adjust the depth, from the rear packer. Which ensures an even finish.

As standard the SUPERMAX is fitted with an outer disc to avoid ridging.



**DALBO**  
Product Brochure

[www.agricar.co.uk](http://www.agricar.co.uk) | [agricarstore.co.uk](http://agricarstore.co.uk)

# Dalbo Rollers



## DALBO®

### Dalbo's Innovation and Unique Characteristics

- » Fully hydraulic folding and unfolding of sections enable switching from driving on roads to field operation without leaving the tractor and without the need for further manoeuvring during the process.
- » Automatic transport locks. For optimal safety and ease of use during transport.
- » Unique frame design and construction that provides a low centre of gravity, great stability and excellent durability.
- » Sealed and greaseable ball bearings that ensure long life and easy maintenance. Rubber suspended bearings are standard on selected models and can be selected on all models.
- » LED lighting. Safety for you and all others on the road.
- » Ø60 mm roller shafts made of high-tensile steel.
- » Strong frames made of quality steel and high-tensile steel.
- » DUOFLEX system that allows individual movement for each roller section, thus ensuring optimal ground contact, regardless of the contours and irregularities of the ground.
- » Hydraulic or mechanical weight distribution in combination with DUOFLEX ensures an evenly distributed ground pressure over the entire working width, and together this creates a perfect soil consolidation.
- » 3D pendulum suspension ensures individual sections can ride over obstacles or uneven ground.

## One of the World's Best Manufacturers of Rollers

➤ **DALBO has the widest range of rollers on the market.** Ever since DALBO began developing and manufacturing rollers in the mid-60s, much has happened in agriculture as a whole, and especially in the roller market. Today, farmers all over the world recognize DALBO rollers for their innovation, performance and quality.

### Roller Categories

DALBO want to help farmers choose the right roller for any purpose. That is why they have divided their rollers into 5 categories:

- » Conventional rollers, typically used before and after sowing.
- » System rollers equipped with various tools.
- » Grass rollers for innovative care and maintenance of grass areas.
- » Knife rollers for cover crops and stubble.
- » Front-mounted rollers and packers, which in conjunction with a rear-mounted implement save a pass.



## Minimax 3-Section 450-950

The MINIMAX roller is an all-round roller that can be used for many purposes. It has been produced since the 1980's. With spring weight distribution, DUOFLEX and a wide range of roller rings, MINIMAX ensures a perfect roller result regardless of use. MINIMAX is especially suitable for light and medium soil types due to the low angle of the drawbar, and the possibility of accessories adds versatility and flexibility, making it a very cost-effective roller.

### Concept

With a MINIMAX, DALBO deliver a precise and high-performance quality roller. It handles all roller tasks before and after sowing and can also be used as a packer for a stubble or seedbed preparation. MINIMAX is their smallest hydraulic folding roller, but still offers you all the usability, performance, and versatility of the larger models. The tractor driver can perform the entire folding and unfolding of the roller sections from inside the tractor and without the need for further manoeuvring, which is both practical and safe. All MINIMAX rollers have DALBO's well-known DUOFLEX system.

The heavy-duty springs ensure an evenly distributed ground pressure plus an individual flexibility that allows each section to follow changing field contours and irregularities. The packing capacity of the roller is ensured in full working width via the large overlap between each section, which provides full-width ground contact, even when turning and working on uneven fields. Most MINIMAX models can be equipped with a hydraulically operated cracker board, making it a great tool for seedbed preparation. In summary, a MINIMAX is a unique combination of value and versatility.



**DALBO**  
Product Brochure



#### Standard Equipment

- » Fully hydraulic folding and unfolding of sections. Switching from driving on roads to field operation without leaving the tractor.
- » Ø60 mm shafts made of high-tensile steel.
- » Strong frames made of quality steel and high-tensile steel.
- » Automatic weight distribution with springs that ensure an evenly distributed ground pressure is ensured across the full working width, regardless of the contours of the soil.
- » DUOFLEX with individual flexibility between sections.
- » Hydraulic weight distribution on 950 model.
- » Automatic transport security for optimal safety during transport.
- » SNOWFLAKE® rings with a 6 year warranty.
- » Detachable support legs.
- » Hydraulic connections: 1xSA and 1xDA.



## Maxiroll Greenline Lift 300

DALBO's mounted MAXIROLL GREENLINE 300 roller is perfect for the care and optimization of grasslands. It is a compact, efficient, and easy to handle 3.00 m roller. It is available in many combinations for handling any task such as levelling, root aeration and consolidation of the soil.

### Concept

MAXIROLL GREENLINE 300 is a fantastic machine for maintenance of existing grass areas. It is also possible to mount a P-box-SpeedTronic STI seeder, so that grass and other seeds can be sown under the roller, which saves an extra pass and valuable time.

Most MAXIROLL GREENLINE rollers are equipped with a front attachment of a 2-row harrow with 12 mm tines. These tines aerate and lift dead grass. A cracker board or a molehill board can also be

mounted in front, which helps to level and thus prepare the ground for the roller section. Two types of roller rings can be mounted snowflake, cross combi as well as DALBO's special balast drum roller with a 710 mm in diameter that can be filled with water. This roller is particularly suitable for working on existing grasslands where efficient consolidation and stone suppression, with a completely flat surface is desired.



#### Standard Equipment

- » Strong frame made of quality steel and high-tensile steel.
- » Jack.
- » Prepared for sowing equipment.



**DALBO**  
Product Brochure

“  
**A cracker board or a molehill board can also be mounted in front, which helps to level and thus prepare the ground for the roller section.**



www.agricar.co.uk | agricarstore.co.uk

# Powerroll 5-Section 1030-1830



**DALBO**  
Product Brochure

DALBO's POWERROLL range is a high-capacity roller. With its innovative features and with a wide range of roller rings, a POWERROLL provides perfect rolling across seasons and applications. The POWERROLL 1030 and 1230 can be equipped with a hydraulically operated cracker board, which makes it an efficient machine for seedbed preparation. At the same time, it can be equipped with sowing equipment, which saves a pass and precious time.



## Concept

POWERROLL is a fully hydraulic roller for modern farmers that places high demands on quality, durability, and efficiency. The POWERROLL series is the market's most compact roller in its category, and despite its large working widths, it can be folded to a transport width of only 3 m, which makes the journey to and from the field easy and safe. The entire folding and unfolding of the roller sections can be done from inside the tractor and without the need for further manoeuvring, which is both practical and safe. POWERROLL is suitable for rolling on all soil types and all types of farms. The hydraulic weight transfer ensures an even distribution across the full working width. With the advanced weight transfer system, it allows us to then follow the contours. On uneven fields, the POWERROLL can roll across the entire working width, as the roller sections overlap and provide full-width ground contact. In summary, a POWERROLL is a versatile roller of high quality and with a large capacity for all users.

### Standard Equipment



- » Fully hydraulic folding and unfolding of sections. Switching from driving on roads to field operation without leaving the tractor.
- » LED lighting.
- » Ø60 mm shafts made of high-tensile steel.
- » Strong frames made of quality steel and high-tensile steel.
- » Hydraulic weight distribution, that ensures an evenly distributed ground pressure over the entire working width, regardless of the contours of the field.
- » DUOFLEX with individual flexibility between sections.
- » Automatic transport security for optimal safety during transport.
- » Hydraulic connections: 3xDA.
- » Hydraulic jack on 1350-1830.
- » Hydraulic brakes on 1350-1830.
- » Strong greasable bearings.
- » At least 500 kg per working metre.
- » Rubber suspended bearings on 1350-1830.



### Standard Equipment



- » Fully hydraulic folding and unfolding of sections. Switching from driving on roads to field operation without leaving the tractor.
- » LED lighting.
- » Ø60 mm shafts made of high-tensile steel.
- » Strong greaseable bearings.
- » Hydraulic weight distribution that ensures an evenly distributed field pressure over the entire working width, regardless of the contours of the field.
- » DUOFLEX with individual flexibility between sections.
- » Automatic transport security for optimal safety during transport.
- » 1xDA and 1xSA on 530-830 and 2xDA on 950-1030.
- » Detachable jack.
- » At least 500 kg per working metre.
- » Strong frames made of quality steel and high-tensile steel.

# Maxiroll 3-Section 530-1030

MAXIROLL's unique roller frame design enable's the opportunity of a wide range of efficient front tools. This makes MAXIROLL a system roller with unique versatility, which can help increase productivity and yield.

## Concept

MAXIROLL is a roller that can be used for many different purposes by combining different front tools. With a MAXIROLL you can perform a variety of tasks, from rolling, stubble cultivation, grassland rejuvenation and seedbed preparation. This makes MAXIROLL a truly versatile roller in the field, and it saves valuable time and costs compared to most other conventional rollers and similar implements. MAXIROLL comes standard with many of DALBO's unique features such as hydraulic weight distribution, DUOFLEX, 6 year warranty on the snowflake ring, automatic transport lock and much more. In summary, a MAXIROLL combines quality, productivity and versatility in a unique product.



**DALBO**  
Product Brochure





**DALBO**  
Product Brochure



## Maxiroll Greenline 3-Section 630 – 830

### Standard Equipment



- » Fully hydraulic folding and unfolding of sections. Switching from driving on roads to field operation without leaving the tractor.
- » LED lighting.
- » Ø60 mm shafts made of high-tensile steel.
- » Strong frames made of quality steel and high-tensile steel.
- » Strong flange bearings.
- » Hydraulic weight distribution, that ensures an evenly distributed ground pressure over the entire working width, regardless of the contours of the field.
- » DUOFLEX with individual flexibility between sections.
- » Automatic transport security for optimal safety during transport.
- » Detachable support jack.
- » Up to 900 kg per working metre.
- » Hydraulic connections: 1xDA and 1xSA.

DALBO's MAXIROLL GREENLINE 630 and 830 are efficient, high-capacity trailed grass rollers. They are specially designed to perform the best possible care and maintenance of grasslands, from efficient rolling and sowing in one pass to optimal maintenance of existing grasslands and areas. In short, a GREENLINE roller helps you increase your productivity, your yield, the quality of the field and the quality of the feed.

### Concept

MAXIROLL GREENLINE 630 and 830 grass rollers are modern and innovative tools for the care of grass areas with 100% hydraulic folding and unfolding. The ballast drum rollers, come with a curved edge to prevent scuffing at the headland. DALBO's proven hydraulic weight distribution ensures an evenly distributed weight across all 3 roller sections, and the DUOFLEX system allows the side frames to follow the ground contours individually. With the possibility of mounting harrow tines, cracker board and much more, including seeders to the Greenline it allows us to do multiple jobs in one pass.

### Productivity And Versatility

The design of DALBO's grass roller frames is derived from their system rollers, making them very versatile and efficient. The MAXIROLL GREENLINE series is available as a lift-mounted, single-section version and two trailed, folding versions. The efficiency of DALBO's grass rollers is ensured by the weight, which is up to 900 kg per. working metre. This ensures that most stones are pressed into the ground.

## Dalbo Front Press



### Efficient utilization

Front-mounted implements are an obvious way to streamline the workflow, as several processes in soil cultivation can be carried out in just one pass. Both time and fuel are saved, which is very



**DALBO**  
Product Brochure

### Front Press



- » LEVELFLEX is designed for mounting with all of our rollers and packer rings, and combined with its robust and heavy frame, it gives excellent results in a wide range of applications.
- » FRONTFLEX is a compact front-mounted roller with a single section for small and medium-sized farms.



### Standard Equipment



- » Fully hydraulic folding and unfolding of sections of 400-600.
- » Ø60 mm shafts made of high-tensile steel.
- » Scraper chains between packer rings.
- » Connection in 3 different heights.
- » Jack.
- » Automatic transport security for optimal safety during transport.
- » Strong frames made of quality steel and high-tensile steel.

## Levelflex 150-600

LEVELFLEX is designed for mounting with all of DALBO's rollers and packer rings, and combined with its robust and heavy frame, it gives excellent results in a wide range of applications. Cracker boards and 2-row harrow attachments are both hydraulically adjustable, making LEVELFLEX an extremely efficient and versatile tool.

### Concept

With working widths from 1.50 to 6.00 metres and a frame large enough to accommodate all ring types and sizes, including the HD packer ring, LEVELFLEX is a unique and efficient front-mounted packer. Its unique geometry makes it very easy to manoeuvre in the field. All frames are designed for mounting very close to the tractor, which minimizes the required lifting force and load on the tractor.

LEVELFLEX is available both as a rigid and hydraulically folding machine, when over 3m. The frame on the rigid models have the bearings placed inside the outer rings. This means that the working width is equal to the transport width, which ensures maximum efficiency. Mounting a cracker board or harrow section in front increases the performance of the LEVELFLEX and makes it a valuable machine for soil consolidation and sowing in one operation.



**DALBO**  
Product Brochure

## Frontflex

FRONTFLEX is a compact front-mounted press with a single section for small and medium-sized farms. We can offer a 3-section folding model of up to 6.00 m in working width and with a transport width of 3.00m with all the good features of the classic FRONTFLEX. The stable and powerful frame construction, together with our quality roller rings, cracker board or 2-row harrow, ensures optimal consolidation of the soil.



### Standard Equipment



- » Fully hydraulic folding and unfolding of the FRONTFLEX (450-600). Switching from driving on roads to field operation without leaving the tractor
- » Strong frames made of quality steel and high-tensile steel
- » Suspension for front and rear mounting
- » Manual transport lock
- » Jack

### Concept

The frame on the FRONTFLEX has the bearings placed inside the outer roller rings, which means that the working width corresponds to the transport width. It ensures maximum productivity as well as a better match for the combination drill or another implement behind the tractor. The choice of either a cracker board or a 2-row harrow, both of which are manually height-adjustable which further increases the usability of the FRONTFLEX and makes it an efficient and inexpensive machine for soil consolidation and seedbed preparation in one operation. Its unique 3-point linkage and frame geometry makes the machine easy to manoeuvre in the field. FRONTFLEX can be delivered with our three most popular roller rings: SNOWFLAKE®, Cross Combi and Crosskill.



**DALBO**  
Product Brochure



**Blairgowrie**

Welton Business Park  
Welton Rd  
Blairgowrie PH10 6HE  
T 01250 870952

**Cupar**

Eden Valley Business Park  
East Road  
Cupar KY15 4RB  
T 01334 243333

**Forfar**

Milton, Padanaram  
By Forfar  
Angus DD8 1PF  
T 01307 462281

**Laurencekirk**

Station Road  
Laurencekirk  
AB30 1BE  
T 01561 378888

**Perth**

West Huntingtower  
Perth  
PH1 3NR  
T 01738 583249

**Stirling**

Unit 1  
The Paddock  
Stirling FK9 4RN  
T 01786 430970

[www.agricar.co.uk](http://www.agricar.co.uk) | [agricarstore.co.uk](http://agricarstore.co.uk)

    YouTube ebay

PART OF THE AGRICAR GROUP

